



Remote Learning Contingency Plan September 2021

Created: September 2020

Last update: September 2021

Contents

1. Context.....	3
2. Aim	3
3. Preparing for remote learning	3
4. Roles and responsibilities.....	4
4.1 Teachers.....	4
4.2 Teaching Assistants	7
4.3 Learning Support Assistants.....	8
4.4 Subject Leads	8
4.5 Senior Leaders.....	8
4.6 IT staff	9
4.7 Pupils and parents.....	9
4.8 Governing board	10
5. Who to contact	10
6. Data protection.....	11
6.1 Accessing personal data.....	11
6.2 Sharing personal data	11
6.3 Keeping devices secure	11
7. Safeguarding	11
8. Monitoring arrangements.....	12
9. Support for Staff.....	12
10. Links with other documents	12
11. Appendix 1 - Students Isolating – Flowchart	14
12. Appendix 2 Example of the information shared with parents on home learning	15

1. Context

The Remote Learning Contingency Plan links to relevant Government Guidance (see documents towards the end of this plan). This is a live document and subject to change in line with updated guidance. Major changes will be communicated with the school community. This document should be read in conjunction with:

- School Risk Assessment
- Behaviour policy
- Child Protection and Safeguarding policy
- Quality of Education Policy

Regardless of National or local restrictions in dealing with Covid-19, Special Schools are to remain open for all students. (SEND and specialist settings: additional COVID-19 operational guidance, August 2021 and Contingency framework: education and childcare settings August 2021). Governors will be consulted regarding any potential partial or full closure; however, the School remains mindful that the expectations are that they remain open.

2. Aim

Though the current directive is for Special Schools to remain open regardless of national or local restrictions, and our contingency plan achieves this, pragmatic decisions and changes to the plan may need to be made. For instance, there may not be enough staff onsite to safeguard all children. In such circumstances, the timetable may require adjustment, similar to that offered during summer term 2020. Such decisions will be made based on pupil individual risk assessment and in consultation with SLT and Governors.

The contingency plan ensures that where a class, group or small number of pupils need to self-isolate, or there is a local lockdown requiring most of the pupils to remain at home, teachers at Maplewell Hall School will be in a position to offer immediate remote education of pupils if:

- they have tested positive for COVID-19 but are well enough to learn from home; or
- attendance at Maplewell setting has been temporarily restricted

3. Preparing for remote learning

- Google Classroom (GC) – will remain our main platform for the delivery of remote lessons.
- The remote education will be equivalent in length to the core teaching pupils would receive in school and will include both recorded or live direct teaching time, and time for pupils to complete tasks and assignments independently
- Pupils will receive Google Classroom refresher sessions (and specific Google Meet instruction) in their Computing / IT lessons during first half of autumn term
- Staff and pupils can log in on a computer, tablet or mobile device (using the GC app). Students also would be able to access the remote through a PlayStation or Xbox.
- Google Classroom can be used to communicate with; individual students or a whole class, set individual or whole work tasks and mark work. It will also provide opportunities for reviewing and reflecting.

- Student timetable for 2021-2022 will be used for home learning, this will allow minimal disruption to planning and supporting students and parents/carers to provide structure. This will also support the reintegration of formal schooling for students on their return.
- Parents and pupils are to be made aware in advance of the arrangements in place for the continuity of education.
- Parents offered training opportunities in school
- Pupils and parents will receive a remote learning timetable via Weduc or post with an indication of which lessons are delivered as 'live lessons'
- If the school remains open, teachers will have greater capacity to provide printed resources, such as textbooks and workbooks to pupils who do not have suitable online access.
- Teachers will provide 5 hours of remote education per a day plus morning registration.
- Students who are in school and students who are learning from home will be following the same curriculum.
- Teachers will use Engagement Tracker for recording pupils' daily engaging with their work, and work with families to rapidly identify effective solutions where engagement is a concern.

4. Roles and responsibilities

4.1 Teachers

From the end of August 2021, all teachers will record their daily lesson resources on to Google Classroom (GC) for the pupils if:

- they have tested positive for COVID-19 but are well enough to learn from home; or
- attendance at Maplewell setting has been temporarily restricted

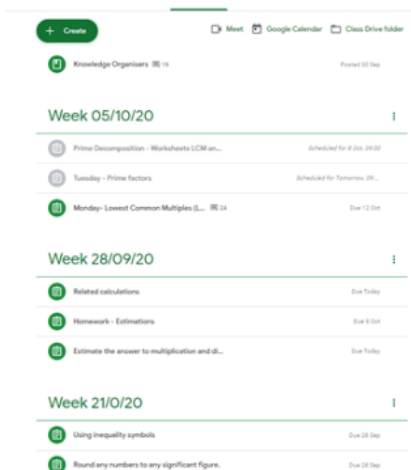
➤ **Teaching from home**

Teachers must be available between 8:50am and 3:30pm, Monday to Friday. If they are unable to work for any reason during this time, for example due to sickness or caring for a dependent, they should report their absence using the normal procedures on the designated absence number. If your absence affects the completion of any work required, ensure that arrangements have been made with the year group partners or SLT to ensure work is completed.

➤ **Setting work**

- When creating lessons on GC, teachers should follow the same steps to ensure consistency in representing the work on the platform. Topic - labelled **Week** (add the date of the week commencing) e.g. 05/10/2020 - Assignment or Quiz/ Materials and include a **due date** for each topic.

Example:



- When uploading lessons on Google Classroom (GC) teachers need to:
 - Provide frequent and clear explanations of the new content either using a PowerPoint with voice over for students whose reading age is <6, or pre-recorded video or, a video taken from the internet (YouTube, Maths Corbett etc.)
 - Avoid an over-reliance on long-term projects or internet research activities. Where possible, only one week of work should be assigned to a class.
- All students need to be set an independent task for each lesson to maintain their skills of learning. E.g. Worksheets, workbooks, quizzes etc.
- For new learning tasks, teachers will provide explanations and scaffold learning to help develop students' understanding.
- Use a curriculum sequence that allows access to high quality online and offline resources and teaching videos, which will be linked to the school's curriculum expectations.
- Set an ambitious task/work set each day in a number of different subjects.
- All planned tasks need to be well sequenced to continue to build pupils' knowledge and skills.
- Teachers can use Oak National Academy resources and other educational websites to support their teaching.

Using Google Meet

- Teachers will need to schedule meetings in Google Classroom every time they schedule a live lesson. Pupils won't be able to re-join once the final attendee has left. This means pupils won't be able to re-join for their own private calls. There is a time lag between students leaving and them being unable to return. The lag is 60-90 seconds, during which a student can return to the meeting if they have copied the link. It is important that teachers stay in the meeting for that period after all the students have left, and then close the meeting.
- Google Meet allows teachers to:
 - In an event of Scenario 1, 2 and 3 (see below) the teacher can host video and pre-record videos from school and home, automatically invite members of other teaching staff, or upload the videos on to GC. Screen sharing will allow teachers to broadcast their screens and open documents, and the visualiser will enable teachers to provide modelling.

- When holding/attending virtual meetings or pre-recording lessons, teachers need to follow:
 - Dress code, dress as for school
 - Locations (e.g. avoid areas with background noise, nothing inappropriate in the background, sit against a neutral background)
 - Avoid recording in their bedroom where possible (if that's not possible, use a neutral background)
 - Remember that other tabs that are open in browser need to be appropriate for a child to see, when sharing their screen
 - Use professional language
- When using Google Chat and Google Meet school will let pupils communicate in Google Chat. If the chat function is not used appropriately or is a distraction from learning, the function will be turned off by the administrator (Mark Lewin)
- Teachers should record the Meeting for easy cloud access at a future date and time - particularly for those pupils who are unwell.
- Teachers should keep a log of who is doing live streams and when.

➤ **Feedback and Assessment**

- Monitoring progress on GC will ensure timely intervention for individuals, or restructuring a unit for a whole class without waiting until the end of unit assessment piece.
- Pupils complete tasks in GC and can use tools like Google Docs and Google Sheets
- Pupils can submit any completed work to teachers with comments via GC or email.
- Teachers will need to establish regular assessment opportunities through questioning, quizzes and other suitable retrieval practice tasks to evaluate what has been learnt and the progress made by pupils.
- Teachers will need to ensure that adjustments are made in response to assessments to confirm extended understanding, including where necessary, revising material or simplifying explanations more to ensure pupils' understanding.
- Teachers will make use of self-marking Google Forms, to aid student retention.
- Where possible, at least once a week, contact is made with families and pupils to maintain and support their academic achievement and personal development.
- Subject teachers will regularly monitor students' engagement and give them on going feedback.
- Feedback may include written or audio feedback, general class feedback, short feedback statements or a mark for correct answers.

➤ **Key scenarios for the Continuity of Education:**

<p>1. The majority of the class and teachers are in school, but some pupils (or even one pupil) are isolating at home.</p>	<p>Teachers will upload on GC pre-recorded videos or deliver live lessons. When a live lesson is arranged, students will receive a timetable alongside with information booklet on Home Learning and Home School Agreement for the Safe Use of Google Classroom.</p> <p>When Live lessons are being delivered, teachers will send a link on 'Stream' on Google Classroom, prior to the lesson. For every live lesson, students will receive a new link</p> <p>When recording videos during lessons, teachers can use a combination of Google Meet (to record/stream the audio and visuals), PowerPoint and visualiser (to support the presentation of content). The teacher's laptop will be presenting to the</p>
--	--

	<p>classroom, displaying, while at the same time recording on Goggle Meet. Teachers will disable specific features e.g. camera, sound (if too loud or behaviour is out of control). Suggestion: record time 20-35 min of the lesson. This may include a starter, modelling and addressing misconceptions.</p> <p>To prioritise the wellbeing and long-term futures of students who are identified as “clinically extremely vulnerable” and advised by their GP to not attend school during the period this advice is in place (national lockdown). Tutors will be arranging with students and their parents to deliver a regular virtual contact during tutor time e.g. registration and reading time.</p> <p>Teachers will stream ‘live lessons’ from classroom if the number of students in the classroom reaches 65%.</p>
<p>2. Whole year group has to isolate.</p>	<p>Whole class or year group at home – the subject lead and subject teachers will co-ordinate together, then deliver work to each year group through GC or GM. This can be as a pre-recorded/live lessons lesson where teachers will be able to give presentations remotely by sharing their screen or using visualiser to do modelling. Students should expect 2 to 3 pre-recorded/ live lessons per day – with a priority schedule for core subjects; Maths, English and Science. Foundation subject teachers need only record 1 lesson per week for each year group. Lessons will continue to follow the normal student timetable.</p>
<p>3. Staff member has to isolate but is well.</p>	<p>Teaching staff will be able to set work through GC and GM to their groups - work will be carried out in school under staff supervision in their normal lesson slot. Staff based at home can either pre-record lessons or stream live lessons. Teachers will need to schedule meetings in GC each time they schedule a live lesson. The invite is only to be sent to staff in the classroom and not the students. When streaming live lessons teachers need to follow their normal timetable and the staff members in the classroom will relay questions/answers or any misunderstanding etc. of the remote learning. Minimum of 3 live lessons or pre-recorded lessons per day. In order to safeguard both students and staff all live lessons will also be recorded.</p>
<p>4. Staff member has to isolate but is unwell.</p>	<p>The Subject lead will coordinate with the other year group teaching staff to ensure that suitable work is set – this may mean utilising Oak Academy resources if the staff absence is lengthy.</p>

4.2 Teaching Assistants

- When assisting with remote learning, teaching assistants must be available between 9:00am and 3:30pm Monday to Friday.
- If they are unable to work for any reason during this time, for example due to sickness or caring for a dependent, they should report their absence using the normal absence procedure.
- During this time, they are expected to check work emails and be available when called upon to attend school.
- Teaching assistants are responsible for:

- Supporting pupils with learning remotely by giving them academic advice
- Supporting teachers with marking, setting small tasks - under the close supervision of the subject teacher
- If a student doesn't join the lessons, TA will contact the parents within 24hours

4.3 Learning Support Assistants

- When assisting with remote learning, learning support assistants must be available between 9:00am and 3:30pm Monday to Friday.
- If they are unable to work for any reason during this time, for example due to sickness or caring for a dependent, they should report their absence using the normal absence procedure.
- During this time, they are expected to check work emails and be available when called upon to attend school.
- Learning support assistants are responsible for:
 - Weekly well-being phone calls to parents that are recorded chronologically on My Concern. The schedules for the phone calls will be led by Designated lead officer.
 - Supporting pupils with their learning remotely
 - Supporting teachers with marking, setting small tasks - under the close supervision of the subject teacher
- Attending virtual meetings with teachers, parents and pupils under the guidance of Pastoral Lead

4.4 Subject Leads

- Continually update information on the school website relating to Online Learning.
- Ensure the curriculum that is delivered will be broad and ambitious; and will include a variety of activities across different subjects.
- School leaders, in collaboration with subject leaders will regularly review the curriculum plans/maps, to ensure that pupils learn the most important things they need to know.
- Subject leaders will review work set by teachers weekly and the impact this is having upon pupils' learning.

4.5 Senior Leaders

-
- Informed parents about the procedure of delivering remote learning.
- School will try to provide IT equipment where possible, prioritising year 11 and 10 and the most disadvantaged students.
- In the event of a long term, whole school lockdown, it will be necessary to issue a separate home learning timetable, to support both students and staff with planning and delivery of lessons.
- Staff will receive regular training to support the use of online tools and resources.
- School will purchase additional laptops and visualisers to access and improve remote learning for staff and students as required.
- Pupils and staff will receive safeguarding training in the safe use of the internet at home.
- School will issue all new parents/carers with guidance on how to access remote learning.
- School will offer training to parents in school on how to use Google Classroom

- Upload any updated information on the school website relating to Online Learning.
- Regularly review curriculum plans/maps provided by subject lead, to ensure that pupils learn the most important things they need to know.
- Continuously review and adapt remote/home learning offer, so that it supports the intended impact of our curriculum and will continue to support those students who are not able to attend school.
- Monitor the security of remote learning system, including data protection and safeguarding considerations
- Maintaining pupil contact, collating, passing on information and responding to any concerns raised. See the COVID-19 amendments to the Child Protection Policy

4.6 IT staff

IT staff are responsible for:

- Fixing issues with systems used to set and collect work
- Supporting staff and parents with any technical issues they experience
- Reviewing the security of systems and flag any data protection breaches to the data protection officer
- Assisting pupils and parents with accessing the internet or devices
- Setting up automatic weekly email digests to parents. These will summarise class activity and work that's due or overdue.
- Adjusting settings to log messages for safe guarding purposes.

4.7 Pupils and parents

Staff can expect pupils to:

- Be contactable during the hours of the school day 8:50am – 3:20pm, although they may not be in front of a device the entire time
- Engage with a daily 'Tutor Time' registration and when possible follow live lesson timetable
- Adhere to our risk assessment on delivering remote learning
- Become familiar with their child/children
 - remote learning timetable
 - information booklet on Home Learning
 - Home School Agreement for the Safe Use of Google Classroom.

Before a Live Session, students should:

- Wear appropriate clothing.
- Ensure a responsible adult is around.
- Be in a shared space in their house, rather than in their bedroom.
- Make others in the house aware that they are taking part in an online session.
- Be prepared for the online lesson e.g. have equipment ready for the live lesson (for example textbook, pen)

During the live Session, students should:

- Use the 'hand up' feature if they wish to ask a question.
- At all times, unless directed otherwise by the teacher, their microphone function must remain switched off.

- During a live lesson, students will be able to hear and/or see teachers. However, they should not be able to use their cameras so they will not be able to see each other.
- Students will be able to communicate with the teacher through the typed chat function.
- As part of a live lesson, students might be asked to turn on their cameras or microphones, but there is no obligation for them to do so.
- Live lessons or pre-recorded lessons remain the intellectual property of the school and/or class teacher and must not be recorded, copied or shared online via social media or otherwise in any format.
- All live lessons will be recorded by the school and if appropriate, made available later on Google Classroom. The live lessons will also be recorded for the purposes of safeguarding and support. They will be archived securely within Google Classroom and not publicly accessible.
- Recorded live lessons published on Google Classroom will allow students to go back to the lesson to refresh their memory when completing any further learning or tasks related to this topic.
- Students must not share their Google Classroom logins.
- Any misconduct will result in the teacher removing the student from the live lesson.
- All the normal rules that we follow at school apply online too.
- Seek help if they need it, from teachers or teaching assistants

Staff can expect parents to:

- Be able to check in with their children during the live lessons
- Seek help from the school if they need it – staff should refer parents to the ‘Google Classroom’ platform and ‘Online Learning’ section on our website.
- Not to share any part of a live lesson or pre-recorded lessons online or otherwise.
- Be respectful when making any complaints or concerns known to staff.

4.8 Governing board

The governing board is responsible for:

- Monitoring the school’s approach to providing remote learning to ensure the education remains as high quality as possible.
- Ensuring that staff are certain that remote learning systems are appropriately secure, for both data protection and safeguarding reasons.

5. Who to contact

If any staff have any questions or concerns about remote learning, they should contact the following individuals:

- Issues in setting work – talk to the relevant subject lead/SLT
- Issues with behaviour – in first instance talk to parents, if further support required, talk to the relevant head of key stage: Jacqui Tarry KS3, Craig Palmer KS4, Nicky Smith-Watson KS5 or COMPASS team
- Issues with IT – talk to IT staff Mark Lewin or Adam Hartshorn
- Issues with their own workload or wellbeing – talk to your line manager/SLT

- Concerns about data protection – talk to the data protection officer: Business Manager, Andrew Patterson or Office Manager Mandy Paris
- Concerns about safeguarding – talk to the lead DSL Rob Cooper or the remaining team of DSL
- All staff can be contacted via their school email addresses

6. Data protection

6.1 Accessing personal data

When accessing personal data, all staff members will:

- Have access to MyConcern to record any parent contact or concerns about children, this is accessed via a secure password. Ensure you log out after use. Do not allow access to the site to any third party.
- Teachers are able to access parent contact details via Go4schools and MyConcern using a secure password. Do not share any details with third parties and ensure you have logged out of Go4schools or MyConcern.
- School laptops and tablets are the school's preferred devices to be used when accessing any personal information relating to pupils.

6.2 Sharing personal data

Staff members may need to collect and/or share personal data such as emails or phone numbers as part of the remote learning system. Such collection of personal data applies to our functions as a school and doesn't require explicit permissions.

While this may be necessary, staff are reminded to collect and/or share as little personal data as possible online.

6.3 Keeping devices secure

This information is based on our protocol on GDPR. Talk to data protection officers (Andrew Patterson and Mandy Paris) for more help, and IT lead (Mark Lewin) if you want to include details on how to put these measures in place.

All staff members will take appropriate steps to ensure their devices remain secure. This includes, but is not limited to:

- Keeping the device password-protected – strong passwords are at least 8 characters, with a combination of upper and lower-case letters, numbers and special characters (e.g. asterisk or currency symbol)
- Ensuring the hard drive is encrypted – this means if the device is lost or stolen, no one can access the files stored on the hard drive by attaching it to a new device
- Making sure the device locks if left inactive for a period of time
- Not sharing the device among family or friends
- Installing antivirus and anti-spyware software
- Keeping operating systems up to date – always install the latest updates

7. Safeguarding

Please see the following for updates concerning safeguarding in relation to home learning:

COVID-19 amendments to the Child Protection Policy- this also details reference to remote learning curriculum and risks online. This policy is available on our website.

8. Monitoring arrangements

This policy will be reviewed as and when updates to home learning are provided by the Government, or by Kasia Glinka (Deputy Head). Every review will be approved by Jason Brooks (Head teacher) and SLT.

9. Support for Staff

Staff mental health and wellbeing are key and staff should contact their SLT/Line Manger should they need support.

10. Links with other documents

Documents and links related to remote (Blended) learning:

➤ Pupils and parents

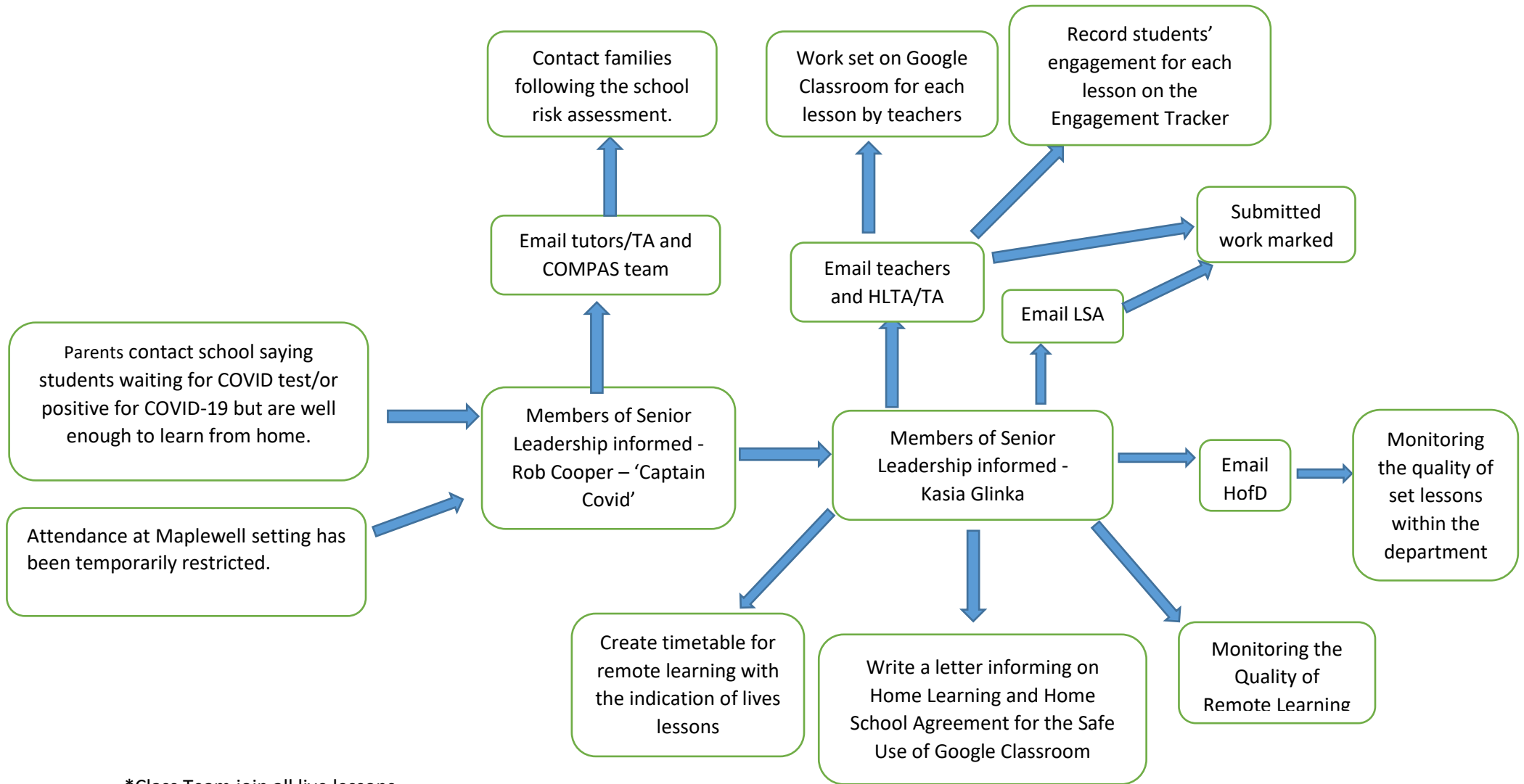
- A guide for Students/Parents/Carers to logging in to Google Classroom
- Student Guide to Google Classroom –Video:
<https://drive.google.com/file/d/1U9XTfsY-GNLZzkLA9VTysD3xcfsyQyoT/view>
- School website – homework learning <https://www.maplewell.leics.sch.uk/online-learning/>
- Education online resources <https://www.gov.uk/government/publications/coronavirus-covid-19-online-education-resources>

➤ Teachers

- Google Classroom instructions for Teachers: <https://get-help-with-tech.education.gov.uk/about-bt-wifi>
- Google Classroom guide converting and adding files
- Google Meet-Recording lessons:
<https://www.loom.com/share/4d1218b7a75c41e0b9b37bf59a105382>
- Guidance Coronavirus: how to stay safe and help prevent the spread, Updated 31 August 2021:
https://assets.publishing.service.gov.uk/government/uploads/system/uploads/attachment_data/file/1010352/how-to-stay-safe-and-prevent-spread-from-19-july-easy-read.pdf
- Schools COVID-19 operational guidance, Updated 27 August 2021:
<https://www.gov.uk/government/publications/actions-for-schools-during-the-coronavirus-outbreak/schools-covid-19-operational-guidance>
- Guidance School inspection handbook, Updated 1 September 2021:
<https://www.gov.uk/government/publications/school-inspection-handbook-eif/school-inspection-handbook>
- Further education COVID-19 operational guidance, Updated 27 August 2021:
<https://www.gov.uk/government/publications/coronavirus-covid-19-maintaining-further-education-provision/further-education-covid-19-operational-guidance>
- Contingency framework: education and childcare settings, August 2021:
https://assets.publishing.service.gov.uk/government/uploads/system/uploads/attachment_data/file/1011704/20210817_Contingency_Framework_FINAL.pdf
- SEND and specialist settings: additional COVID-19 operational guidance, August 2021:

<https://www.gov.uk/government/publications/guidance-for-full-opening-special-schools-and-other-specialist-settings/send-and-specialist-settings-additional-covid-19-operational-guidance-applies-after-step-4>

11. Appendix 1 - Students Isolating – Flowchart



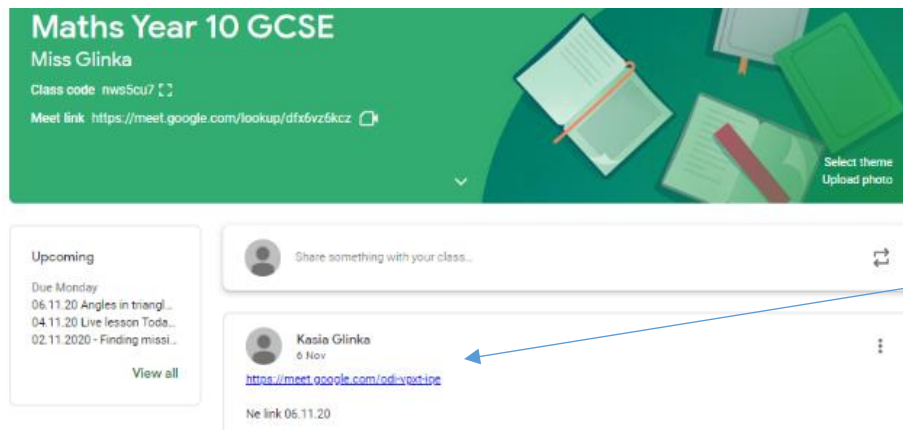
*Class Team join all live lessons

12. Appendix 2 Example of the information shared with parents on home learning

Information on Home Learning for.... from

Where possible, students are advised to follow their normal timetable from to so that they can take advantage of any live lessons being delivered.

- Live lessons are highlighted in Green
- Lessons in white will be for students to complete the set tasks independently.
- Tutor Time will start at 08:50am every day. All students are expected to attend.
- Students should aim to complete as much work as they can. Teachers will be tracking and monitoring engagement on Google Classroom.
- Timetabled lessons will be delivered in one of three ways:
 - Live lessons with their class teacher
 - Pre-recorded video and/or narrated lessons
 - Independent resources such as videos, quizzes, PowerPoints and worksheets
- When 'Live' lessons are being delivered, teachers will send a link on 'Stream' on Google Classroom, prior to the lesson (see example below). For every live lesson, students will receive a **new link**.



Link to a live lesson.

Timetable for live lessons from

- The links to the lessons will be send prior to the lesson (see the information above)

Link to a live lesson

Remote Learning Contingency Plan September 2021/22

- Live lessons are indicated by a **coloured highlight** (green)

		Monday 22nd	Tuesday 23rd	Wednesday 24th	Thursday 25th	Friday 26th
	Time	Subject	Subject	Subject	Subject	Subject
Registration	8:50	Tutor time	Tutor time	Tutor time	Tutor time	Tutor time
Lesson 1	9:00	Science	Maths	PE (pre-recorded)	Maths	Prep. for adulthood
Lesson 2	9:50	Maths	Perf. Art (pre-recorded)	PE	Belief and Ethics	English
Reading	10:40- 11:20	Reading	Reading	Reading	Reading	Reading
Break						
Lesson 3	11:35	DT/Food	History	Maths	ART	Geography
Lesson 4	12:25	DT/Food	English	Maths	ICT (pre-recorded)	English
Lunch break						
Lesson 5	14:25	English (pre-recorded)	Science	English	Science	