



More than a School

Maplewell Hall School

KS4 Curriculum Options 2024

A subject choice guide for students, parents and carers

Contents

Message from the Deputy Head	3
Key Dates.....	4
Key Stage 4 Curriculum	5
Supporting your child in making informed decisions	6
Understanding the different types of qualifications	6
GCSE's (Grades 1-9).....	6
Vocational qualifications (BTEC, Award or Certificate)	7
Entry level (level 1-3)	7
Will I get all my choices?	7
Subject advice and information: Curriculum Leaders	8
Careers guidance:	9
Options available : 2024-2025	10
Animal Care/Land-Based (L1 Introductory)	11
IT (Level 1/2)	12
Duke of Edinburgh Award	14
Engineering (Level 1/2)	16
English Language (GCSE)	17
English Literature (GCSE)	18
English (Step up to English – Entry Level)	19
Enterprise and Marketing Level 1/Level 2	20
Geography.....	23
Health and Social Care (Level 1 /Level 2).....	24
Home Cooking Skills (Level 1/2).....	27
Independent Living (Vocational Studies)	28
Examples of subjects covered for Independent Living (Vocational studies)	29
Mathematics (Entry Level Certificate)	30
Mathematics (GCSE)	31
Performing Arts (Level 1)	32
Science (Entry Level Certificate)	33
Science (GCSE).....	34
Sports Studies (Level 1/2)	35

Message from the Deputy Head

Dear Year 9 Student's, Parents/Carers,

This is an exciting time for year 9 students as this is the first time they will be able to make a choice about their curriculum. To help students choose their options, they will need to think about what they want to gain by the end of year 11. This is an important decision and one that we, as a school, will also support with.

Each year we offer slightly different choices. We are extremely ambitious for our students, and our governors expect us to furnish students with the best and most competitive batch of qualifications we can. This is so that our students can go forward and take advantage of all the opportunities available in Post 16 courses, apprenticeships and the wider world.

Key Stage 4 is an exciting opportunity to choose foundation subjects that pupils will study for the next two years and possibly beyond. Deciding what your child wants to be able to do could be difficult for them, so staff at Maplewell will support them during this process to prevent any anxiety and, where possible, misunderstandings of what happens in each subject. In addition, all year 9 students will participate in one-to-one career meetings where our school Career Adviser will support them in making their option choices. The session will consider where to find reliable sources of guidance and how to make positive, informed choices.

This booklet will help guide you towards making the best option choices for your future and inform you about the different qualification pathways in subjects at Maplewell.

Year 10 and 11 is about focused study, creativity and trying a new experience during their learning. It is about working hard, earning rewards and being recognised for their achievements and contribution to school life. We will continue to build students' independence skills and support them in striving to do their best to achieve their full potential.

Above all, it is about them becoming the person they want to be in readiness for their future.

Kasia Glinka

Deputy Headteacher

Key Dates

**Tuesday the 6th
February 2024**

Year 9 Options booklets and forms
issued

Year 9 Parents and Options Evening-

**Friday the 1st March
2024**

Options form deadline 3pm

Key Stage 4 Curriculum

What subjects are compulsory?

English language and literature or Entry Level	5 lessons per week
Mathematics GCSE or Entry Level	5 lessons per week
Science GCSE (Combined, Trilogy) or Entry Level	4 lessons per week
Preparing for Adulthood (not examined)	1 lesson per week
Physical Education (PE)	1 lesson per week
Computing	1 lesson per week
Religious Studies (RE)	1 lesson per week
And	
Up to 3 'Optional subjects'	2 lessons per subject, 6 lessons per week

Vocational qualifications (BTEC, Award or Certificate)

All vocational courses tend to be coursework led so that the final grade is an accurate reflection of a pupil's performance over a 2-year period. Pupils study a range of units that cover different skills and topics to enable them to gain this qualification.

Entry level (level 1-3)

Entry-level qualifications are working below GCSE and Level 1, but enable all pupils to access a qualification to acknowledge the work that they have completed over 2 years. Typically, these qualifications are coursework and practical skill led.

Will I get all my choices?

We cannot, at this stage, guarantee that every course will be running in September 2023. - This will be determined by number of students showing interest in a particular course. If this occurs, we will have a discussion with your child about the options they can select from instead.

We will also check pupil selections with our subject teachers, to ensure they have made an informed selection based on their progress and strengths.

Subject advice and information: Curriculum Leaders

Subject	Staff	Email address
Art, Craft and Design (GCSE)	Mrs Folland	A.Folland@maplewell.leics.sch.uk
Engineering (BTEC)	Mr James	nathanjames@maplewell.leics.sch.uk
Independent Living (BTEC)		
Science (GCSE/Entry Level)	Miss Comerford	s.comerford@maplewell.leics.sch.uk
The Duke of Edinburgh's Award	Mrs Bullock	lizbullock@maplewell.leics.sch.uk
English (GCSE/Entry Level)	Mrs Durrands	k.durrands@maplewell.leics.sch.uk
Enterprise and Marketing Level (Cambridge National)	Mr Palmer	C.Palmer@maplewell.leics.sch.uk
Sports Studies (Cambridge National)	Mr Gray	R.Gray@maplewell.leics.sch.uk
Maths (GCSE/Entry Level)	Ms Greenhill	C.Greenhill-chamberlain@maplewell.leics.sch.uk
Performing Arts (BTEC)	Mrs Stanton	daniellastanton@maplewell.leics.sch.uk
IT (Cambridge National)	Mr Senior	d.senior@maplewell.leics.sch.uk
Animal Care/ Land-Based (L1 Introductory)	Mrs Braisby	E.braisby@maplewell.leics.sch.uk
Geography (GCSE)	Mr Russell	j.russell@maplewell.leics.sch.uk
History (GCSE)	Mrs James-Weir	SamanthaWeir@maplewell.leics.sch.uk
Health and Social Care (BTEC)	Miss Ladva	s.ladva@maplewell.leics.sch.uk
Home Cooking Skills (BTEC)	Mrs Lewis	b.lewis@maplewell.leics.sch.uk

Careers guidance:

Career support at MHS

Career Advice can be given by anyone. In school, career advice is often given by subject teachers when they suggest that a student has the ability to study that subject in Year 10. All your child's teachers will be offering this level of career advice. A tutor might also give advice to a student when they suggest that they choose one subject over another based on their knowledge of Essential Skills and P4A mastery. Your child's tutor will be giving this level of career advice too.

Career Guidance refers to the impartial guidance provided by a Registered Career Development Professional (RCDP) working to the Career development Institute's Code of Ethics. Rob Cooper is the School's RCDP. All students in year 9 will be allocated a 50-minute Career Guidance meeting between 7th and 28th February to discuss their options.

In a career guidance, meeting it is not Mr Cooper's job to tell students what subjects to choose or to persuade students to choose the subjects their parents want them to do. It is Mr Cooper's job in these meetings to give students an opportunity to discuss their choices and to use active and deep listening skills to check that they have made informed choices, and where information is missing, to provide that information.

Overview of College Requirements

For Post-16 education, English and maths are key. For courses up to Level 1 and including level 2, these will be the only named subjects on the entry requirements. For level 3 courses, additional subjects may be named on the entry requirements, but there would always be a route in by taking a level 2 course first. *

All college entry requirements vary, and you should check on individual college websites for the most accurate entry requirements, but as a rough starting point, the following entry requirements give you an idea of what colleges want.

- SEN specific entry level courses – No formal qualifications.
- Level 1 – GCSEs at grade 1 or 2, including English and/or maths.
- Level 2 – GCSEs at grade 3, including English and/or maths.
- Level 3 – Vocational – Level 2 in the subject plus GCSEs at grade 4, including English and/or maths.
- Level 3 – A' Level; or T' Level – GCSEs at grade 4, including English and/or maths, with some subject specific GCSE grade 5/6

*For some courses such as Art, college would want to see a portfolio of work at interview.

Your child's year 9 choices will not close any doors into post-16 education or employment. For example, a child who did not choose a food subject, may still leave at the end of Year 11 to do a vocational food course at college up to level 2. Colleges will also want to see at least 90% attendance and a positive reference from school. This means your child is much better off choosing courses and subjects they enjoy and are motivated by, rather than thinking that to get on a particular college course they have to choose that subject.

Careers supportive websites

Our new and updated career section of the school website is a great starting point and you should bookmark the student area and visit it regularly: <https://www.maplewell.leics.sch.uk/student-area/>

All of our students will finish year 11 with the qualifications to access an appropriate course at college if they want to. What they may lack are the Essential Skills to enable them to transition to college successfully. The Essential Skills home zone is a great site to help your child develop these skills: <https://www.skillsbuilder.org/homezone>

Every child at Maplewell has a Start account. By completing their Start profile and exploring the Start site, your child can identify possible future pathways:

<https://careers.startprofile.com/page/home-page>

Options available: 2024-2025

On the following pages, you will find the core subjects of Maths, English Language and Literature and Science.

In each case, we have given details of the examination board, subject specification and career pathways, so you can track them online. The subject specification will tell you exactly what is covered in each subject.

Animal Care/Land-Based (L1 Introductory)



Exam Board: City and Guilds

Course Overview:

A City & Guilds Level 1 Award or Certificate in Land-based Studies is for anyone who is thinking about or interested in a career working with animals, growing food crops, or managing our natural environment.

Learners do not need any experience of working in a land-based role or any previous qualification, just an enthusiasm and commitment to gain new skills and learn about the importance of the land-based industries.

The course allows learners to gain these skills in a practical way whilst building coursework to be assessed along with a multiple choice externally assessed test.

How the qualification is assessed:

For the Award, you will be assessed by an external multiple-choice test and an assignment.

For the Certificate, you will be assessed by an external multiple-choice test and three assignments.



Where does it lead?



Level 1 Land Based Studies is a preparation to work or further study in the area of farming, land work or a career in animal studies or care. Pupils can then choose to study at the next level 2 or 3 qualification. This could then lead to jobs within the land-based sector such as working in a pet shop, kennel worker, farm worker, dog or pet care or agriculture.

Assessment and other information:

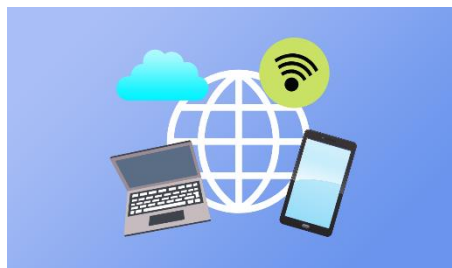
<https://www.cityandguilds.com/qualifications-and-apprenticeships/land-based-services/agriculture/0361-landbased-studies#tab=information&acc=level1>

IT (Level 1/2)

Cambridge Nationals

IT Level 1/Level 2 – J836

Exam Board: OCR Cambridge National



Course Overview:

This qualification will enable you to learn about the different design tools that can be used, the principles of human computer interfaces and the use of data and testing when creating IT solutions or products. You will also understand the uses of Internet of Everything and the application of this in everyday life. You will develop the skills to plan and design a spreadsheet solution to meet a client's requirements. You will be able to use a range of tools and techniques to create the spreadsheet solution which will be tested, and you will learn to evaluate your spreadsheet solution. Finally, you will develop the knowledge and skills relating to the purpose, use and types of Augmented Reality (AR) in different contexts and how it is used on different digital devices. You will develop the skills to design, create, test and review an AR model prototype. This will provide you with the learning for a range of IT related further study, important transferable skills and some basic industry knowledge and skills.

- **How the qualification is assessed:**
- 40% final examination
- 60% non-examined assessment portfolio

You can expect to:

You will study three mandatory units:

R050: IT in the digital world. - This is assessed by taking an exam.

In this unit, you will learn about design and testing concepts for creating an IT solution or product, and the uses of IT in the digital world.

Topics include:

- Design Tools
- Human Computer Interface (HCI) in everyday life
- Data and testing
- Cyber-security and legislation
- Digital Communications
- Internet of Everything (IoE)

R060: Data manipulation using spreadsheets. - This is assessed by completing a set assignment.

In this unit, you will learn how to plan, design, create, test and evaluate a data manipulation spreadsheet solution to meet client's requirements. You will be able to evaluate your solution based on the user requirements.

Topics include:

- Planning and designing the spreadsheet solution
- Creating the spreadsheet solution
- Testing the spreadsheet solution
- Evaluating the spreadsheet solution

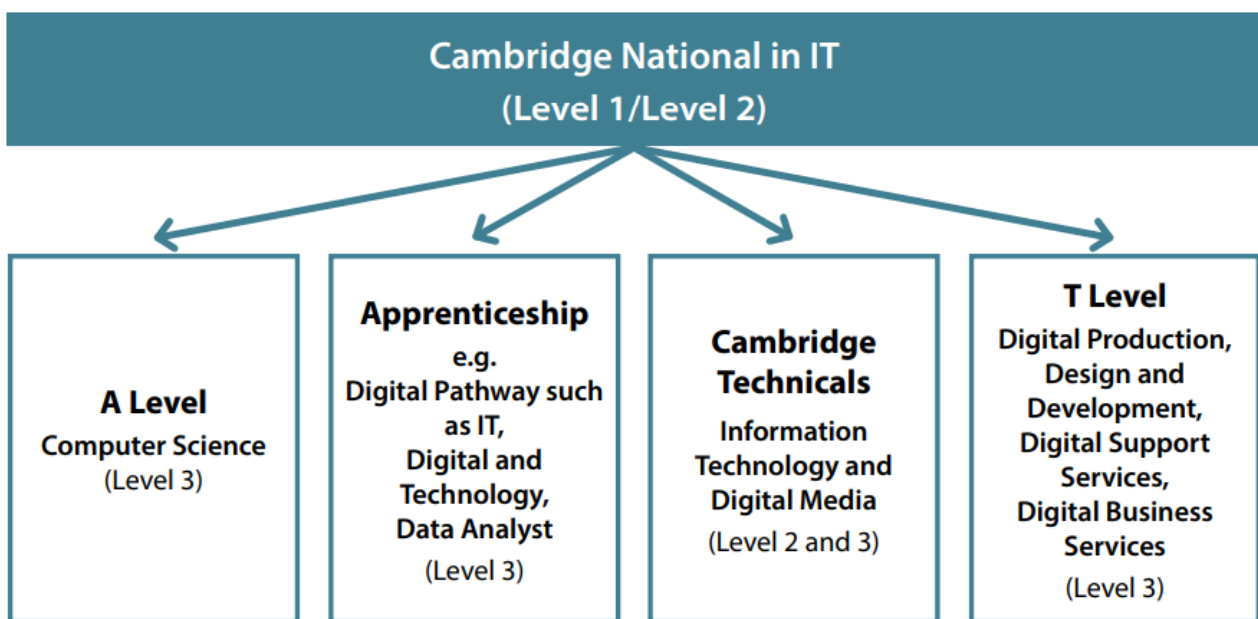
R070: Using Augmented Reality to present information. - This is assessed by completing a set assignment.

In this unit, you will learn how to design, create, test and review an Augmented Reality model prototype to meet a client’s requirements.

Topics include:

- Augmented Reality (AR)
- Designing an Augmented Reality (AR) model prototype
- Creating an Augmented Reality (AR) model prototype
- Testing and reviewing.

Where does it lead?



Website Link:

<https://www.ocr.org.uk/qualifications/cambridge-nationals/it-level-1-2-j836/>

Duke of Edinburgh Award



What is the Duke of Edinburgh' Award?

The Duke of Edinburgh' Award is regarded very highly by further and higher education establishments; it demonstrates that you have a wider range of abilities and attributes and that you can adapt to a variety of different challenges.



Maplewell Hall School runs an extremely successful Duke of Edinburgh Award Scheme. Our award programme of practical, cultural and adventurous activities effectively supports the personal development of our students.

By participating in the Award students gain resilience, learn the value of team working, increase in confidence and develop their self- esteem. The scheme requires persistence and commitment and it has a lasting impact on the attitudes and outlook of all young people who undertake the Duke of Edinburgh' Award.

Students learn new skills, help others, have fun, make new friend and gain a great sense of achievement. Employers, colleges or universities really value this qualification.

What does The Duke of Edinburgh' Award involve?

At Maplewell Hall Scholl we offer The Duke of Edinburgh' Award as an option in years 10 and K5. Year 10 and 11 students work for their Bronze level which then allows them to progress to Silver in K5.

Students are instructed by qualified Duke of Edinburgh' Award Leader in the four sections of the Award:

- Expedition
- Volunteering
- Physical
- Skill



The Expedition section comprises of learning navigational skills, team working, first aid and Trangia cooking. The final aim of this section is to successfully complete a two-day expedition with an overnight camp with the team being self-sufficient throughout.

Volunteering sessions can range from conservation work, assisting in lessons or school clubs.

To complete the Physical section students', take part in sporting activities at a range of venues both in and out of school. We aim to introduce them to new sports which are not included the PE curriculum.

For the Skills unit we have previously studied cycle maintenance, woodwork, gardening, cooking and sports officiating. Future groups will follow a subject which is of interest to them

With regular attendance and full participation in D of E sessions, Maplewell students will have no difficulty in achieving their Award.

One of the most exciting things about this programme is that our students can achieve at the same level as young people in any setting.

How the course is assessed:

Pupils have to complete a range of tasks throughout the two years to achieve the final award. This includes expedition and camping work. Work is assessed by our own teachers plus a visiting assessor. The course is very practical based and pupils need to be prepared for all weathers.

Additional information:

Pupils will require the correct clothing kit and shoes for this award. We have some items available in school, but we encourage these to be purchased due to the regularity of use. A kit list will be provided at the beginning of the course.

Website Link

<https://www.dofe.org/do/>

Engineering (Level 1/2)

Exam Board: Pearson BTEC

Course Overview:

The Award gives learners the opportunity to develop sector-specific knowledge and skills in a practical learning environment. The main focus is on four areas of equal importance, which cover the:

- development of key engineering practical and technical skills, such as research, observation, measurement, making, using computer-aided design (CAD) and disassembly
- knowledge of key engineering sectors (mechanical, electrical/electronic and engineering design) and the interrelation of each in industry
- knowledge of the stages involved in planning and implementing an engineering project
- knowledge and skills involved in the investigation of solutions to engineering problems in response to a given brief



This Award complements the learning in GCSE programmes such as GCSE Design and Technology by broadening the application of design and make tasks, working with an engineering brief, testing and evaluation.

How the qualification is assessed:

Components 1 and 2 are assessed through internal assessment. Internal assessment for these components has been designed to relate to achievement of application of the conceptual underpinning for the sector through realistic tasks and activities. This style of assessment promotes deep learning through ensuring the connection between knowledge and practice. The components focus on:

- the development of core knowledge and understanding of engineering sectors,
- their interconnections and how they relate to the roles of employees in engineering industries.

Where does it lead?

- Study at Level 2 post-16 in a range of technical routes designed to lead to work, to progression to employment, to apprenticeships or to further study at Level 3. For these learners, the attitudes and the reflective and communication skills covered in this qualification will help them achieve.
- Study of engineering post-16 through the study of a Technical Certificate. Learners who perform strongly in this qualification compared to their overall performance should strongly consider this progression route as it can lead ultimately to employment in the engineering sector.

Website Link:

<https://qualifications.pearson.com/en/qualifications/btec-nationals/engineering-2016.coursematerials.html#%2FfilterQuery=category:Pearson-UK:Category%2FSpecification-and-sample-assessments>

English Language (GCSE)

Exam Board: AQA

Course Overview:

The AQA Language specification is designed to inspire and motivate students, providing appropriate stretch and challenge whilst ensuring that the assessment and texts are, as far as possible, accessible to all students.

It enables students to develop the skills they need to read, understand and analyse a wide range of different texts and write clearly in a range of styles. Prospective GCSE students will begin working on these analytical skills during Key Stage 3.

How the qualification is assessed:

The Language GCSE is assessed through two exams:

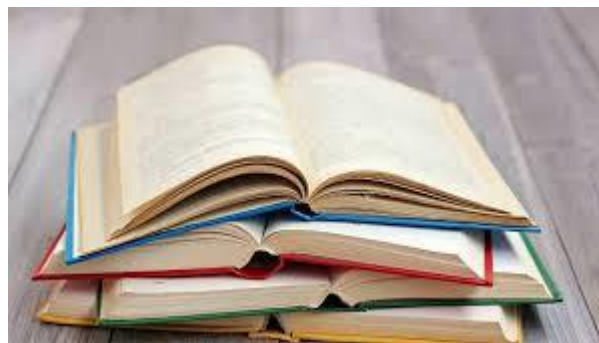
- **Language Paper 1 (50% of GCSE)** consists of an unseen extract from a fictional text with accompanying questions, plus a creative writing question.
- **Language Paper 2 (50% of GCSE)** consists of two unseen extracts from non-fiction texts, plus a non-fiction writing question.

Where does it lead?

GCSE English Language is one of the most important qualifications a person can have; as it helps to unlock many doors to further education and employment.

Website Link:

<https://www.aqa.org.uk/subjects/english/gcse/english-language-8700/specification-at-a-glance>



English Literature (GCSE)

Exam Board: AQA

Course Overview:

The English Literature specification is designed to inspire, challenge and motivate every student, regardless of ability level. Whilst it is arguably more challenging than Language, the transferable skills learnt during the teaching of the Language specification will be invaluable to Literature students.

The specification offers a wide range of texts for study; there are texts that will be familiar, as well as new ones that will inspire young readers. All students will study a combination of novels, poetry and drama.

How the qualification is assessed:

The Literature GCSE is assessed through two exams.

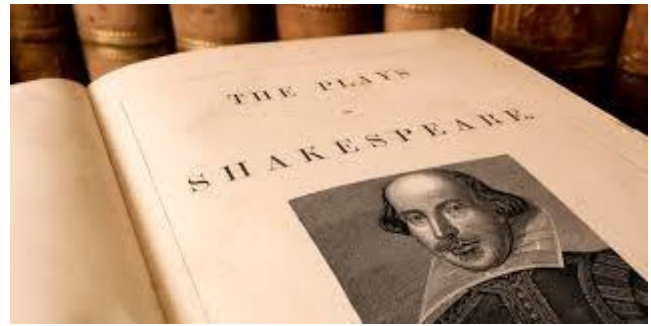
- **Literature Paper 1: Shakespeare and the 19th Century Novel (40%)**
Students will answer one question on a Shakespeare play and one on a 19th Century novel. In their responses, students will analyse the themes of the novel, the events and characters and the links to context.
- **Literature Paper 2: Modern Texts and Poetry (60%)**
Students will answer one question about a modern play or novel which they have studied, analysing characters, themes and context. Students will then answer a comparison question on a selection of poems from an anthology. Finally, students will analyse an unseen poem.

Where does it lead?

A GCSE in English Literature will give students vital skills that can lead on to further studies or a career in one of its associated fields. English Literature will demonstrate to employers that a student has acquired reasoning and analytical skills, essential for all future pathways.

Website Link:

<https://www.aqa.org.uk/subjects/english/gcse/english-literature-8702/specification-at-a-glance>



English (Step up to English – Entry Level)

Exam Board: AQA

Course Overview:

Step up to English helps Entry Level students build basic and relevant literacy skills and is suitable for students of all ages. The specification will encourage Entry Level students to develop the skills they need to read and understand a range of texts as well as to write clearly, coherently and accurately using a range of vocabulary and sentence structures.

It offers two 'Steps': Silver Step (Entry Level 1 and 2) and Gold Step (Entry Level 3). The two step approach is ideal to build confidence and provide access to further English qualifications.

Assessment is carried out in the classroom. The specification offers two components in both steps:

How the qualification is assessed:

- **Component 1:** Literacy Topics, asks students to complete a number of reading, writing and speaking and listening tasks based around a theme set by AQA.
- **Component 2:** Creative Reading and Writing asks students to read and answer questions about fiction and non-fiction texts, and to write creatively.

Where does it lead?

The Step Up qualification is designed as a 'boost' before GCSE Language or Functional Skills; therefore, some of our students undertaking this qualification will go on to follow one of these pathways later on in their time at Maplewell.

Whichever English qualification your child studies at Maplewell Hall School, the reading, writing and communication skills learnt will form the basis of any future pathway. Whether students plan to continue with us into K5, enrol on a college course, or undertake the challenge of an apprenticeship, the English Department at Maplewell will endeavour to equip every student with the necessary functional literacy skills and creative mindset for future success.

Website Link:

<https://www.aqa.org.uk/subjects/english/elc/step-up-to-english-5970/specification-at-a-glance>

Enterprise and Marketing Level 1/Level 2

Exam Board: OCR Cambridge National

Course Overview:

This course is aimed at students, who wish to develop applied knowledge and practical skills in enterprise and marketing. It is designed to sit alongside other GCSEs and contains both practical and theoretical elements, which will prepare students for further study of qualifications in enterprise, marketing or business.

The Cambridge National in Enterprise and Marketing is graded pass, merit and distinction for Level 1 and pass, merit, distinction and distinction* for Level 2.

How the qualification is assessed:

Students must complete three units:

- one externally assessed unit (exam)
- two centre-assessed units (NEA)



How the qualification is assessed:

This qualification has three mandatory units:

- Unit R067: Enterprise and Marketing Concepts - This is assessed by an exam.

In this unit, you will learn about the key factors to consider and activities that need to happen to operate a successful small start-up business.

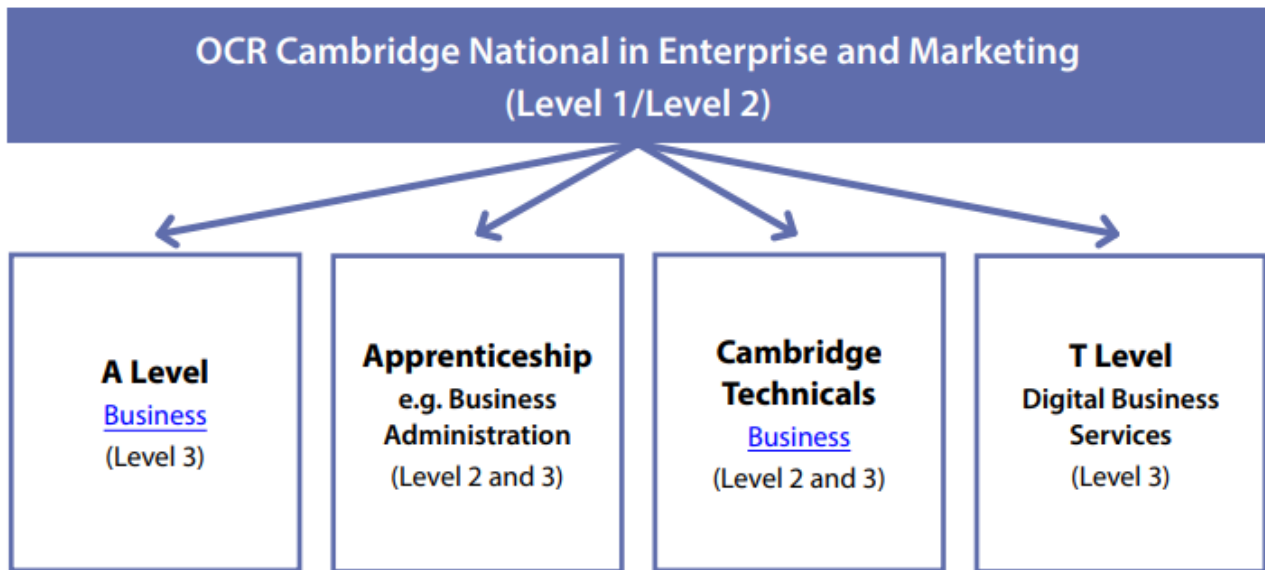
- Unit R068: Design a Business Proposal - This is assessed by a set assignment.

In this unit, you will identify a customer profile for a specific product, complete market research to generate product design ideas, and use financial calculations to propose a pricing strategy and determine the viability of their product proposal.

- Unit R069: Market and Pitch a Business Proposal - This is assessed by a set assignment.

In this unit, you will develop pitching skills to be able to pitch your business proposal to an external audience. Finally, you will review your pitching skills and business proposal using self-assessment and feedback gathered.

Where does it lead?



Website Link:

<https://www.ocr.org.uk/Images/610949-specification-cambridge-nationals-enterprise-and-marketing-j837.pdf>

Art, Craft and Design (GCSE)



Exam Board: AQA

Course Overview:

You will explore the formal elements of art; colour, line, tone, texture, shape, form and become more aware of Art and Design processes in two and three-dimensions. You complete a portfolio of work with themes such as Sweets and Desserts, Portraiture, The Figure and Landscapes. You will research these themes using drawing and photography, developing initial ideas using a variety of media including paint, print, collage and sculpture. You'll learn about artists and designers who work within these themes. Finally, you'll produce a large-scale piece based on your investigations. The externally set task (exam) follows the same process, but uses themes set by the exam board.

How the qualification is assessed:

You will work from the starting points and have the opportunity in lessons to experiment with, and develop, skills and media. You will work in sketchbooks and on larger pieces throughout the course. These form a portfolio of work to present for assessment. All class work and homework from the start of Year 10 to the end of year 11 count towards your final GCSE grade.

- A portfolio of work, which is developed over Years 10 and 11 (worth 60%)
- Externally set task starts January of Year 11 (worth 40%)

Where does it lead?

A-level, BTEC, Degree qualifications and Careers in: Art and Design including areas such as Fashion, Graphics, Architecture, Photography and Animation.

Website Link:

<https://www.aqa.org.uk/subjects/art-and-design/gcse/art-and-design-8201-8206/subject-content/fine-art>

Geography

Exam Board: OCR B – “Geography for enquiring minds”

Course Overview:

Geography is not only an up-to-date subject which is relevant to the lives of everyone but it is also one of the most exciting, adventurous and valuable subjects which you can study. Geography brings together the world of hard scientific facts and processes with human interaction and reaction.

Skills which you will develop include:

- interpreting photos and graphs
- boosting your memory
- convincing others you are right
- listening to and understanding the views of others
- investigating contemporary issues in the real world
- problem solving.

The content will focus on three components:

1. The natural world in which students develop an understanding and appreciation of the natural world they live in and why it looks the way it does. They study the rich diversity of landscapes and ecosystems, which are changing through physical processes and human interactions.
2. People and society in which students explore the social, cultural, political and economic forces that make places unique, and how these change over time and space, particularly the growth of urbanisation and the challenges of feeding an ever-growing population.
3. Geographical exploration. This component draws on geographical knowledge, understanding and skills that have been developed in the components above.

How the qualification is assessed:

Each of the three components are assessed through examination. Components 1 and 2 are worth 35% of the total mark and each last 1 hour and 15 minutes. The third component is worth 30% of the total mark and the time allocated is 1 hour.

Where does it lead?

Geographers enter a very wide range of careers and to put simply there is no such thing as a geography job, rather there are jobs that geographers do. Studying geography provides you with a huge range of valuable skills and a firm base for life-long learning. With geography qualifications, you can be anything from a conservationist, journalist, planner, teacher or any job in the tourist industry to name but a few.

Website Link:

<https://www.ocr.org.uk/qualifications/gcse/geography-b-geography-for-enquiring-minds-j384-from-2016/>

Health and Social Care (Level 1 /Level 2)

Exam Board: Pearson BTEC Introductory

Course Overview:

The Health & Social Care Introductory qualification enables all learners to study core units that focus on key transferable skills such as research and planning, time management and working with others.



How the qualification is assessed:

Assessment is designed to fit the purpose and objective of the qualification and all units are internally assessed – giving learners the opportunity to demonstrate skills developed in applied scenarios. There is a range of assessment styles suited to skills- and sector-based qualifications at this level. All units are graded to encourage skills development and performance.

These qualifications consist of two types of unit. Group A units are the core skills units, they cover content designed to reflect the skills and behaviours needed to progress to further study. Group B units are made up of sector units containing sector-specific content to enable learners to develop sector-specific skills and some knowledge to support progression to the next stage of vocational learning.



You can expect to:

Learners will be given contexts and scenarios to help them develop skills and to acquire knowledge through application. Learners will not develop all the knowledge and skills needed to enter the labour market in a given sector, but will develop pre-employability skills and contextualised knowledge to allow them to progress to further learning and training and, ultimately, to become successful in their chosen sector.



Where does it lead?

This qualification prepares learners for further learning at a higher level in Health and Social Care, for example BTEC Level 2 qualifications in this sector, BTEC Level 2 Apprenticeships in health and social care sector or to Level 2 qualifications in other sectors.

Website Link:

<https://qualifications.pearson.com/en/qualifications/btec-entry-level-level-1-and-level-1-introductory/health-social-care-l1-introductory.html>

History

Students on this course will be working towards a Full course GCSE in History.

GCSE (1- 9)

Exam board:

AQA

Course overview:

At Maplewell Hall School, the GCSE History course is delivered over a two year period. However, topics and skills needed to succeed at KS4 History will have been embedded within Key Stage 3 lessons to best prepare students for the course.

How the exam is assessed:

There are two written exams that are 2 hours each (2 ½ hours each including access arrangements) and consists of 84 marks, including marks for spelling, punctuation and grammar (SPaG) • Each exam paper is split into two sections (A and B.) Each exam is 50% of the overall GCSE grade.

Paper 1- Understanding the Modern World

Section A: Period studies. Students will study:

- [AB Germany, 1890–1945: Democracy and dictatorship](#)

Focus is on two key developments in a country's history over at least a 50 year period. Assessment involves six compulsory questions that total 40 marks which includes both shorter and essay questions.

Section B: Wider world depth studies. Students will study the following option:

- [BB Conflict and tension: The inter-war years, 1918–1939](#)

Focus is on international conflict and tension. Assessment involves four compulsory questions that total 40 marks which includes both shorter and essay questions plus 4 marks for SPaG.

Paper 2- Shaping the nation

Section A: Thematic studies. Students will study the following option:

- [AA Britain: Health and the people: c1000 to the present day](#)

Key developments in Britain over a long period. Assessment involves four compulsory questions that total 40 marks which includes both shorter and essay questions.

Section B: British depth studies including the historic environment. Students will study the following option:

- [BC Elizabethan England, c1568–1603](#)

Assessment involves four compulsory questions that total 40 marks which includes both shorter and essay questions plus 4 marks for SPaG.



You can expect to:

- Experience high-quality and engaging lessons.
- Have a variety of intriguing subjects to explore.
- Develop excellent communication and writing skills
- Learn how to construct an argument
- Practice research, developing investigation and problem-solving skills
- Strengthen analytical and interpretation skills.

Where does it lead?

Learning about past events and the people who've influenced history will allow you to understand how the world got to the point it's at now and how it will continue to develop in the future. Studying History can lead on to some exciting career options, including: Journalism, Law, Business, Politics, Archaeology, Marketing and Teaching.

Additional information:

Students will be expected to:

Complete set homework and hand in on time

Bring their exercise books (if taken home) and a pen, pencil and ruler to every lesson

Be open to discussion and brave enough to ask questions and share their views.

Home Cooking Skills (Level 1/2)



Exam Board: Pearson BTEC

Course Overview:

The BTEC Level 1 and Level 2 Awards in Home Cooking Skills have been developed to give learners the opportunity to develop:

- The importance of having a healthy, sustainable diet using a wide variety of fresh ingredients
- Knowledge, understanding and confidence to prepare and cook meals at home
- Understanding of a healthy balanced diet
- How to economise when planning meals
- How to follow a recipe
- Valuable life skills
- Safety and Hygiene in the kitchen when cooking
- How to safely store different foods



How the qualification is assessed:

Centre-devised assessments for all units.

You can expect to:

Learners who have achieved the BTEC Level 1 Award in Home Cooking Skills can progress on to the BTEC Level 2 Award in Home Cooking Skills.

This course aims to give learners the knowledge, skills and confidence to enjoy preparing and cooking meals at home, including: breakfasts, lunches, dinners, snacks, desserts and cakes. Learners will gain understanding of how to economise when planning meals to cook at home. The unit will encourage learners to transfer skills learnt to other recipes to continue cooking for themselves and their families and to inspire others by passing on their knowledge.

The unit is based on the proposition that being able to cook is an essential life skill which empowers people to make changes that have benefits to health and wellbeing.

The intended destinations for learners successfully achieving these qualifications include:

- Cooking meals at home independently
- Certificate in Hospitality and Catering at College
- Post 16
- Apprenticeships in café's, catering establishments, restaurants, hotels, guesthouses...

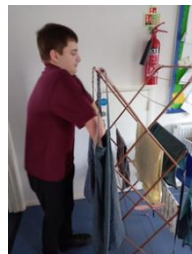


Website Link: <https://qualifications.pearson.com/en/qualifications/myskills/btec-home-cooking-skills.html#%2Ftab-0>

Examples of subjects covered for Independent Living (Vocational studies)

Unit HT13: Working in Housekeeping

The unit covers the cleaning requirements for bedrooms, bathrooms and communal areas and the safe and correct handling of cleaning materials used to service accommodation facilities. Hotels, self-catering apartments, halls of residence and residential care homes, as well as non-residential care have housekeeping to ensure a clean environment.



Unit PS9: Planning and Navigating a Route

In this unit, you will learn how to use a map and orientate it against the real geography around you. You will learn the signs and symbols that are used on maps, as well as what grid lines are and how you can use them. When you know how to use a map properly, you can use it to plan and navigate a route, as well as use it to find out where you are. You will learn how to plan a route and also think about the equipment and the possible problems you may face when carrying out the route.



Unit HSC8: Advising Others About Healthy Lifestyles

In this unit, you will select and prepare information about activities that can help promote a healthy lifestyle for an information-sharing event, based on your understanding of the factors that can affect health. You will find out about and plan ways to promote health. You will use this information when working as a team to present information about healthy lifestyles to others.



Mathematics (Entry Level Certificate)

Exam Board: AQA

Course Overview:

The learning outcomes and assessment criteria reflect the national adult numeracy standards from Entry 1 to Entry 3.

The qualifications in Mathematics are built from 8 components. Each component covers a particular topic area. The qualification is designed to cover concepts of functional Maths which students will need going forward to be as independent as possible.

How the qualification is assessed:

Internal assessment and/or portfolio.

You can expect to:

- Gain a firm understanding of following areas of Mathematics:
 - Component 1: properties of number
 - Component 2: the four operations
 - Component 3: ratio
 - Component 4: money
 - Component 5: the calendar and time
 - Component 6: measures
 - Component 7: geometry
 - Component 8: statistics

Where does it lead?

The AQA entry level course is specifically designed to build the knowledge learners need to access the GCSE. Therefore, students who excel in the course will have the opportunity to access the GCSE course and hence sit the same exams as described above. The qualification provides students with a basis for progression towards other related courses, and future employment.

Assessment and other information:

- understand and use mathematical information
- calculate and manipulate mathematical information
- interpret results and communicate mathematical information

Website Link:

<https://www.aqa.org.uk/subjects/mathematics/elc/mathematics-5930/specification-at-a-glance>

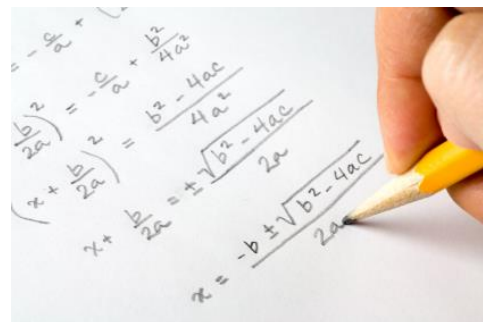


Mathematics (GCSE)

Exam Board: AQA

Course Overview:

At Maplewell Hall School, the GCSE Mathematics course is delivered over a three year period from year 9 to year 11. However, all of our Year 9 students who are on pathway A or in MAP, have already started working towards concepts and topics associated with the GCSE.



How the qualification is assessed:

The course is divided into two tiers, Foundation and Higher, and students will cover the material for one of these tiers depending on their ability. The students sit the examinations for the GCSE in the summer term of year 11. They will sit three papers; each paper is the same duration in length (90 minutes plus any extra time) and equally weighted towards the final grade. There is no coursework element to the Mathematics course.

- Paper 1 – Non calculator – 1 hours and 30 minutes
- Paper 2 – Calculator – 1 hours and 30 minutes
- Paper 3 – Calculator – 1 hours and 30 minutes

You can expect to:

- Gain a firm understanding of following six key areas of Mathematics:
 - Number
 - Algebra
 - Geometry and Measures
 - Ratio and proportion
 - Statistic
 - Probability
- Develop strings of reasoning and problem solving skills that will be beneficial in later life.
- Developed independent study through regular homework assignments and online resources.

Where does it lead?

Mathematics is a beautiful and engaging subject that equips students with vital reasoning and problem-solving skills. Due to the broad nature of the subject, a strong grasp of Mathematics will support learning in other subject areas such as Science, ICT, Business Studies and even certain aspects of Physical Education. Many career paths are open to Mathematics students, including computing, child care, animal care and academia.

Assessment and other information:

Students will require the following equipment for every lesson during the GCSE Mathematics course:

- pen, pencil, rubber and ruler
- protractor, a pair of compasses;
- a scientific calculator (available to purchase from Maplewell Hall School)

Website Link: <https://www.aqa.org.uk/subjects/mathematics/gcse/mathematics-8300/specification-at-a-glance>

Performing Arts (Level 1)

Exam Board: Pearson BTEC

Course Overview:



Pearson BTEC Level 1 Introductory Certificate in Performing Arts
Learners must complete both core units and three sector units.

Pearson BTEC Level 1 Introductory Certificate in Performing Arts			
Unit reference	Unit title	GLH	Type
Core			
Group A units – learners must complete both units			
A1	Being Organised	30	Core
A2	Developing a Personal Progression Plan	30	Core
Sector			
Group B units – learners must complete three units			
PA5	Using a Stimulus for Performance	40	Sector
PA6	Designing Technical Support	40	Sector
PA7	Providing Technical Support	40	Sector
PA8	Performing a Dance Routine	40	Sector
PA9	Performing a Piece of Music	40	Sector
PA10	Acting in a Performance	40	Sector
PA11	Personal Preparation for Performance	40	Sector
PA12	Rehearsing for a Performance	40	Sector

How the qualification is assessed:

The course is made up of units that go towards 100% coursework and this is continually assessed throughout the 2 years. This will include written information and videos of performances.

You can expect to:

Performing Arts, can encourage students to explore their emotions, expanding their imagination and helping them develop their own, unique voice. Each discipline within the performing arts sector (acting, singing and dance), engage the brain, body and emotions in different ways to encourage their confidence and find joy in self-expression.

The Pearson BTEC Level 1 Introductory Certificate in Performing Arts are designed around practical skills and tasks that place an emphasis on students demonstrating what they can do rather than what they know in theory.

The qualifications give learners the opportunity to acquire and develop generic, transferable and sector-specific skills in order to complete tasks and demonstrate a level of achievement that enables them to progress to further learning.

Where does it lead?

- BTEC level 2 performing arts in colleges
- Builds learners confidence and self esteem
- Practice for interviews

Assessment and other information:

Students will take part in performances, which will be ticketed events. Students will be treated as if they are working in a company and will be expected to act professionally.

Website Link:

<https://qualifications.pearson.com/en/qualifications/btec-entry-level-level-1-and-level-1-introductory/performing-arts-11.html#%2Ftab-0>



Science (Entry Level Certificate)

Exam Board: AQA

Course Overview:

AQA Entry Level is a coursework and internal assessment based science qualification.

It is aimed at pupils who struggle under exam conditions.

This is a very flexible and far more “hands-on” course. It aimed at teaching pupil’s key knowledge and skills that are similar to the GCSE course. This course is also designed to enable pupils to develop their independence and ability to work in a group, and possibly progress to GCSE studies in future. The course is taught in units over two years.

These qualifications aim to provide learners with basic scientific enquiry skills, experimental skills and research skills. They are designed to support pupils who may need to develop their basic practical abilities. The units cover a variety of science topics, but are broadly similar to what is taught in GCSE, but at a less demanding level.

How the qualification is assessed:

Internal assessment – 100%

You can expect to:

- Complete research projects.
- Perform practical.
- Develop team working skills.
- Develop independence.
- Develop organisational skills.

Where does it lead?

Upon completion of Entry Levels, there is the option of pursuing more skills-based qualifications in post-16.

Assessment and other information:

Students will require the following equipment for every lesson during the AQA Entry Level course:

- pen, pencil, calculator, rubber and ruler

Website Link:

<https://www.aqa.org.uk/subjects/science/elc/science-5960/specification-at-a-glance>



Science (GCSE)

Exam Board: AQA

Course Overview:

At Maplewell Hall School, GCSE science is delivered over 2 years, starting in year 10 and completing in year 11. All three sciences are covered in equal amounts over the 2 years to ensure a balanced curriculum. The KS3 content taught in year 9 will support their learning in GCSE.



How the qualification is assessed:

The course is divided into two tiers, Foundation and Higher. Work will be provided that covers these tiers according to individual pupil ability. External assessment is 100% exam and students' final grade will be based on 6 exams, out of which a total score is obtained and a Science double grade e.g. 5-5 is obtained.

If it is decided that the 6 exams are not the correct pathway for particular students, then AQA Single Biology is also offered as an alternative. This course is assessed via 2 terminal exam papers, and pupils obtain 1 GCSE in Biology.

You can expect to:

- Gain a balanced education in all 3 areas of Science: Biology, Chemistry and Physics
- You will also:
 - Develop practical skills.
 - Improve your ability to handle data.
 - Form conclusions.
 - Work independently and as part of a team.

Where does it lead?

Science is an essential subject for numerous courses, and is one of the three core subjects. Science is used in our daily lives, so it is important to have an understanding of the changing world we live in. Science provides pupils with a deeper understanding of how and why things work, and is an excellent subject for teaching "hands on" skills. Pupils who complete GCSE science attend courses such as animal care, and vehicle maintenance.

Assessment and other information:

Students will require the following equipment for every lesson during the GCSE Science course:

- a scientific calculator (available to purchase from Maplewell Hall School)
- a CGP revision guide and work book (available to purchase from Maplewell Hall School)

Website Link:

GCSE Trilogy Science

<https://www.aqa.org.uk/subjects/science/gcse/combined-science-trilogy-8464/specification-at-a-glance>

GCSE Science Biology

<https://www.aqa.org.uk/subjects/science/gcse/biology-8461/specification-at-a-glance>

Sports Studies (Level 1/2)

Exam Board: OCR Cambridge National

Course Overview:

At Maplewell Hall School, the Level 1/2 Cambridge Nationals in Sports Studies course is delivered over a two year period.

How the qualification is assessed:

The Sports Studies course is assessed through a one hour written examination paper, which equates to 33.3% of the course. The other 66.6% is assessed through assignments and coursework tasks which students will have to complete both inside and outside lesson time.

You can expect to:

The two mandatory units are:

- **R184:** Contemporary issues in sport. - This is assessed by an exam.

By completing this unit, you will understand a range of topical and contemporary issues in sport, including learning about participation levels and barriers to completing sporting activities. You will also learn how participation is impacted by the promotion of values and ethical behaviour, about the role of high-profile sporting events, the role of national governing bodies and how technology is used in within sport.

- **R185:** Performance and leadership in sports activities. - This is assessed by a set assignment

In this unit, you will have an opportunity to develop your skills both as a performer in two different sporting activities, and as a leader, developing a range of transferable skills. You will work both independently and as part of a team, including communicating with team mates as well as being in front of an audience when you perform. You will perform under pressure, both as a participant and as a leader, and will use your initiative to solve problems and make decisions.

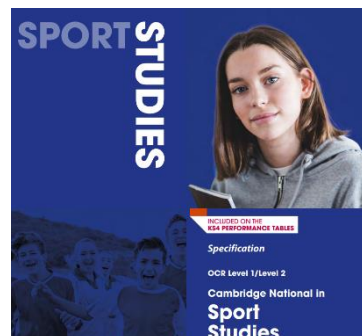
The two optional units assessed by a set assignment:

- **R186:** Sports and the media -

In this unit you will understand the different sides of a range of media sources and apply real life examples to show the nature of the relationship between media and sport. You will then develop your ability to evaluate and interpret the different ways in which sport is represented by the media.

- **R187:** Increasing awareness of Outdoor and Adventurous Activities -

In this unit you will understand how to find out information about what opportunities there are in your local area as well as nationally in the UK for all different types of outdoor/adventurous activities. You will learn how to enjoy the activities safely by finding out what equipment, clothing, facilities and technology you need, as well as completing planning to help keep you safe.



Where does it lead?



Assessment and other information:

Students will require the following equipment for every lesson during the Sports studies course:

- pen, pencil, rubber and ruler
- PE kit and footwear for all weathers

Website Link:

<https://www.ocr.org.uk/qualifications/cambridge-nationals/sport-studies-level-1-2-j829/>